



**SONORO**  
**GOLD CORP**

CORPORATE PRESENTATION

**CERRO CALICHE GOLD PROJECT**  
**Mexico's Next Gold Mine**

TSXV: SGO | OTCQB: SMOFF | FRA: 23SP

**MARCH 2025**

# FORWARD-LOOKING STATEMENT

## Forward-Looking Statement Cautions:

“Forward-looking information” as defined in applicable Canadian securities legislation. All statements other than statements of historical fact, included in this release, including, without limitation, statements regarding the Cerro Caliche project, and future plans and objectives of the Company, including the NPV, IRR, initial and sustaining capital costs, operating costs, and LOM production of Cerro Caliche, constitute forward looking information that involve various risks and uncertainties. Forward-looking information is based on a number of factors and assumptions which have been used to develop such information, but which may prove to be incorrect, including, but not limited to, assumptions in connection with the continuance of the Company and its subsidiaries as a going concern, general economic and market conditions, mineral prices, the accuracy of Mineral Resource Estimates. There can be no assurance that such information will prove to be accurate and actual results and future events could differ materially from those anticipated in such forward-looking information. Important factors that could cause actual results to differ materially from the Company’s expectations include exploration and development risks associated with the Company’s projects, the failure to establish estimated Mineral Resources or Mineral Reserves, volatility of commodity prices, variations of recovery rates, and global economic conditions. The forward-looking information contained in this release is made as of the date of this release. The Company disclaims any intention or obligation to update or revise any forward-looking statements, whether as a result of new information, future events or otherwise, except as required by law or the policies of the TSX Venture Exchange. Readers are encouraged to review the Company’s complete public disclosure record on SEDAR at [www.sedar.com](http://www.sedar.com).

## Qualified Person:

All scientific or technical information contained in this presentation has been reviewed and approved by Stephen Kenwood, P.Geo., a Director of Sonoro Gold Corp., who is a “Qualified Person” as defined in National Instrument 43-101 of the Canadian Securities Administrators.

# WHY INVEST IN SONORO GOLD?

## COMPANY HIGHLIGHTS

- ✓ Publicly listed gold exploration and development company (TSXV: SGO) (OTCQB: SMOFF) (FRA: 23SP)
- ✓ Highly experienced management team in financing & developing mineral resources
- ✓ Highly experienced technical team in discovering & developing gold deposits with 5M oz discovered
- ✓ Collectively developed 12 gold and copper mines
- ✓ Two precious metals properties in Sonora, Mexico
  1. Cerro Caliche Gold Project - Flagship
  2. San Marcial Gold & Silver Project



**John Darch**  
Chairman & Director

40 years experience in financing, development & operations in the international resource sector.



**Jorge Diaz**  
Vice Chairman & VP Operations

50 years mining experience including development and construction of the Mulatos Mine and La Colorada Mine.



**Kenneth MacLeod**  
President & CEO

40 years experience as financier, developer & operator in the resource sector including nine years in Mexico.



**Melvin Herdrick**  
P.Geo, VP Exploration

50 years experience, formerly Head of Exploration Mexico for Phelps Dodge & Pediment Gold.



**Oscar González**  
Chief Geologists & Project Manager

20 years experience in mineral exploration and development within Mexico.

# CAPITAL STRUCTURE

2140.03

## Share Structure

Trading Symbols	<b>CANADA TSXV: SGO</b>
	<b>USA OTCQB: SMOFF</b>
	<b>GERMANY FRA: 23SP</b>
Year High/Low Share Price	\$0.115 - \$0.03
60-day Average Share Price	\$0.09
Average Monthly Volume (6 months)	6.1M
Market Capitalization	\$20M
<b>Current Issued &amp; Outstanding</b>	<b>212.6M</b>
Warrants (\$0.15)	22.6M
Warrants (\$0.14)	5.62M
Warrants (\$0.07)	41.0M
Options (\$0.15)	15.3M
<b>Shares Fully Diluted</b>	<b>297.1M</b>

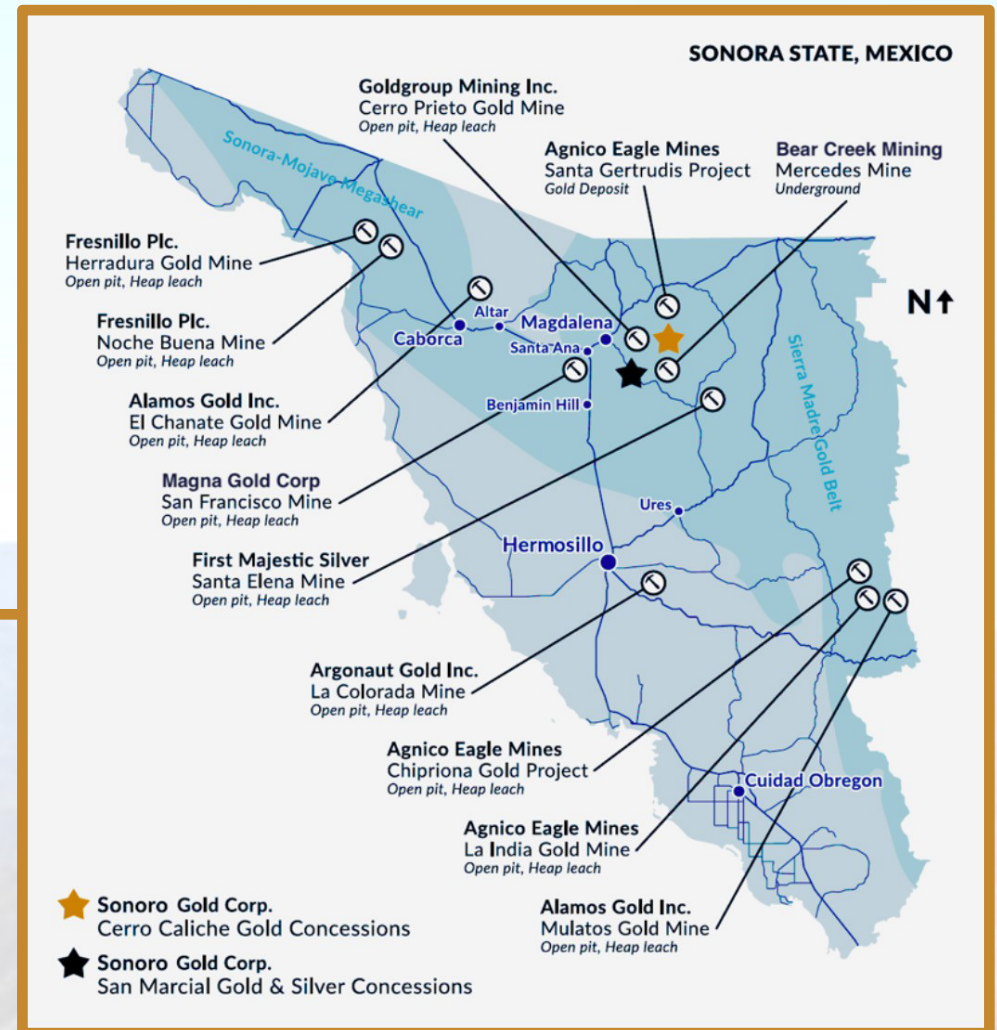
# Mexico - Political



*President Sheinbaum emphasized the need for a review, not because of “lobbies of large companies”, but the importance of mining to the economy of Mexico and environmental protections.*

# LOCATION

- ✓ 3 hours north of Hermosillo
- ✓ 3 hours south of Tucson, AZ
- ✓ First-class infrastructure
- ✓ Pro-mining jurisdiction
- ✓ Neighbouring Gold Mines
  - Bear Creek Mining's Mercedes Gold Mine
  - Agnico Eagle's Santa Gertrudis Gold Project
  - Magna Gold Corp's San Francisco Mine



# CERRO CALICHE GOLD PROJECT

- ✓ Oxide Gold-Silver Deposit
- ✓ 498 Drill holes & 55,360 m of Drilling Data
- ✓ Mineral Resource Estimate (MRE) Filed Mar 2023
- ✓ Preliminary Economic Assessment (PEA) Filed Oct 2023
- ✓ Amenable to Open-Pit, Heap-Leach Mining
- ✓ Permitting Phase for Near-Term Production

## \$1,800/oz Gold Price

**USD \$71.4M / \$47.7M**

Pre-Tax / Post-Tax NPV (5%)

**59% / 45%**

Pre-Tax / Post-Tax IRR

**2.9 Years**

Payback Period

## \$2,000/oz Gold Price

**USD \$116.8M / \$77M**

Pre-Tax / Post-Tax NPV (5%)

**85% / 63%**

Pre-Tax / Post-Tax IRR

**2.4 Years**

Payback Period

## CERRO CALICHE MRE

**Indicated Mineral Resources 19.9 Mt**

✓ 290,000 oz AuEq @ 0.46 g/t

**Inferred Mineral Resources 10.5 Mt**

✓ 150,000 oz AuEq @ 0.44 g/t

**Potential Target Mineralization\***

✓ **15 to 22.5 Mt containing:**

➤ 125,000 to 285,000 oz AuEq

## CERRO CALICHE PEA

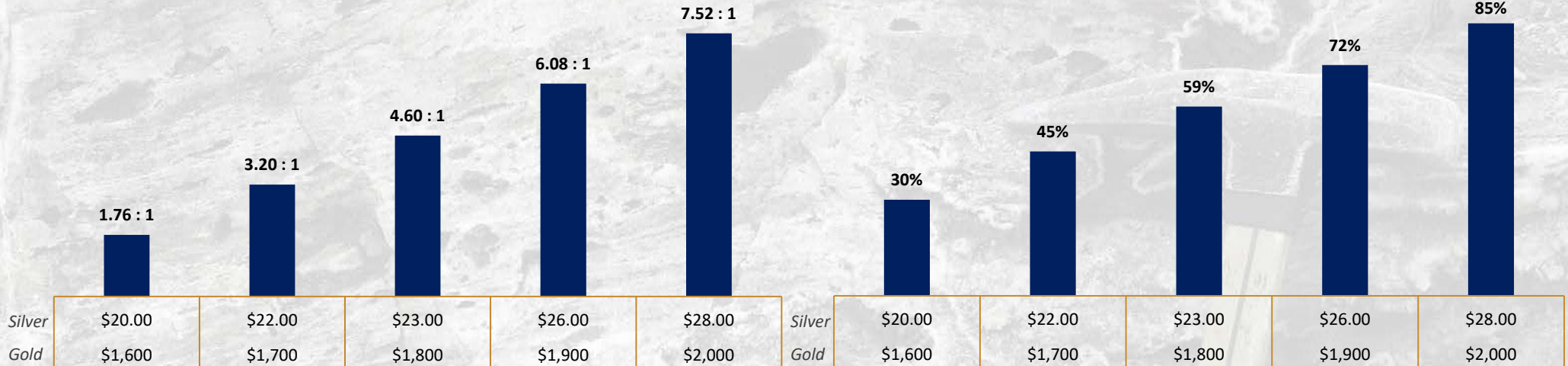
✓ AuEq (oz) Recovered	297,575
✓ Initial Capital Costs	\$15.5 M
✓ Sustaining Capital	\$15.5 M
✓ Cash Costs per Ounce	\$1,295
✓ AISC per Ounce	\$1,395
✓ Initial Life of Mine	9 Years

*The PEA is preliminary in nature and includes inferred resources that are considered too speculative to have the economic considerations applied to them that would enable them to be categorized as mineral reserves and there is no certainty the estimates presented in the PEA will be realized. The results of the economic analyses represent forward-looking information as defined under Canadian securities law. The results depend on inputs that are subject to known and unknown risks, uncertainties and other factors that may cause actual results to differ materially from those presented.*

# GOLD & SILVER PRICE SENSITIVITY ANALYSIS – CERRO CALICHE

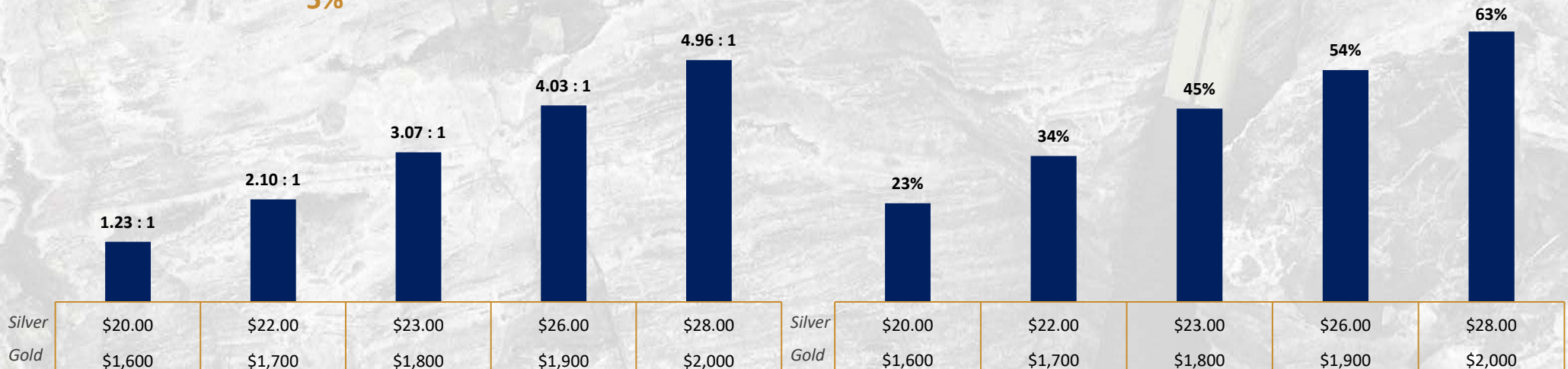
## Pre-Tax NPV<sub>5%</sub> : CAPEX

## Pre-Tax IRR %



## After-Tax NPV<sub>5%</sub> : CAPEX

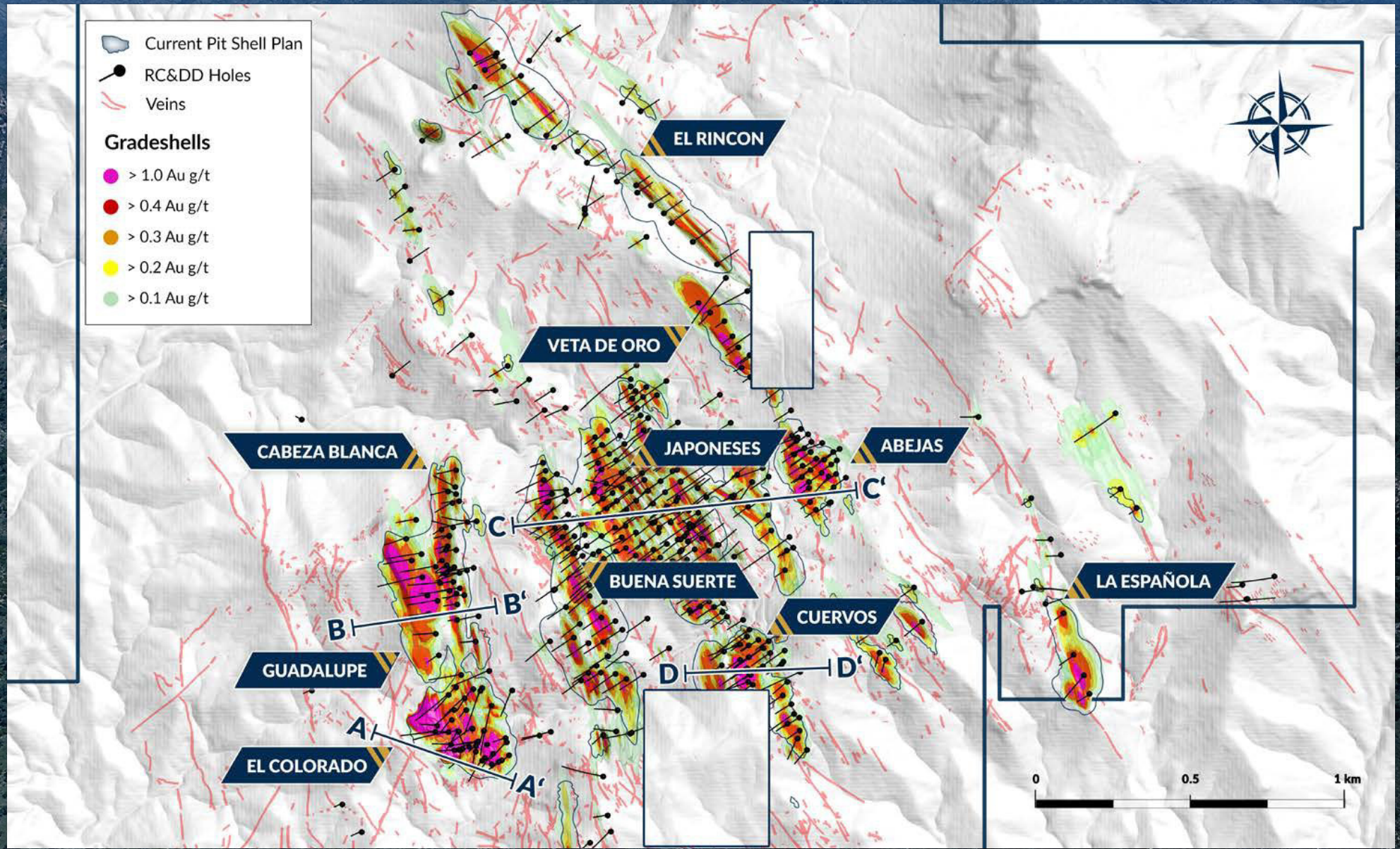
## After-Tax IRR %



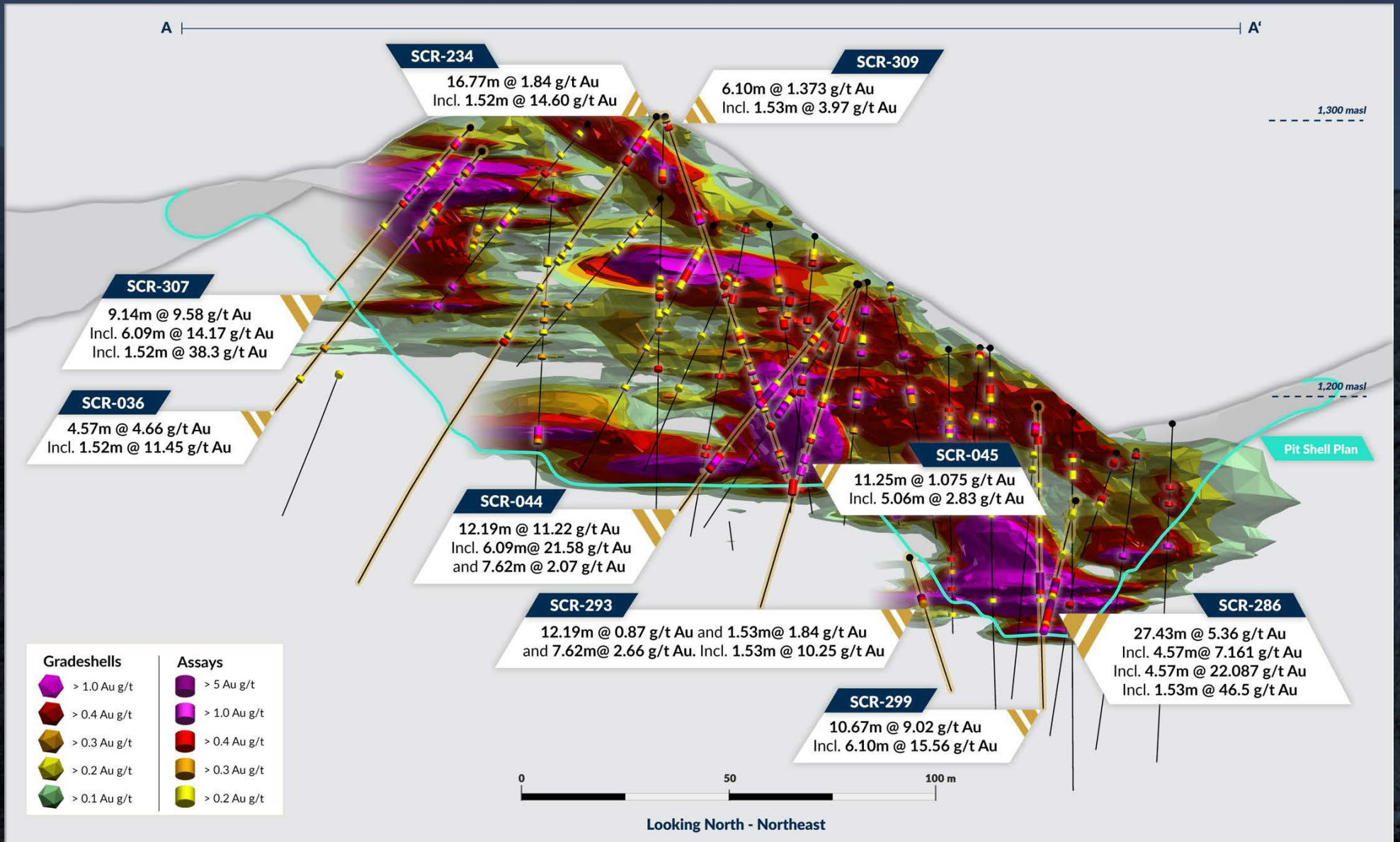
The PEA is preliminary in nature and includes inferred resources that are considered too speculative to have the economic considerations applied to them that would enable them to be categorized as mineral reserves and there is no certainty the estimates presented in the PEA will be realized. The results of the economic analyses represent forward-looking information as defined under Canadian securities law. The results depend on inputs that are subject to known and unknown risks, uncertainties and other factors that may cause actual results to differ materially from those presented.



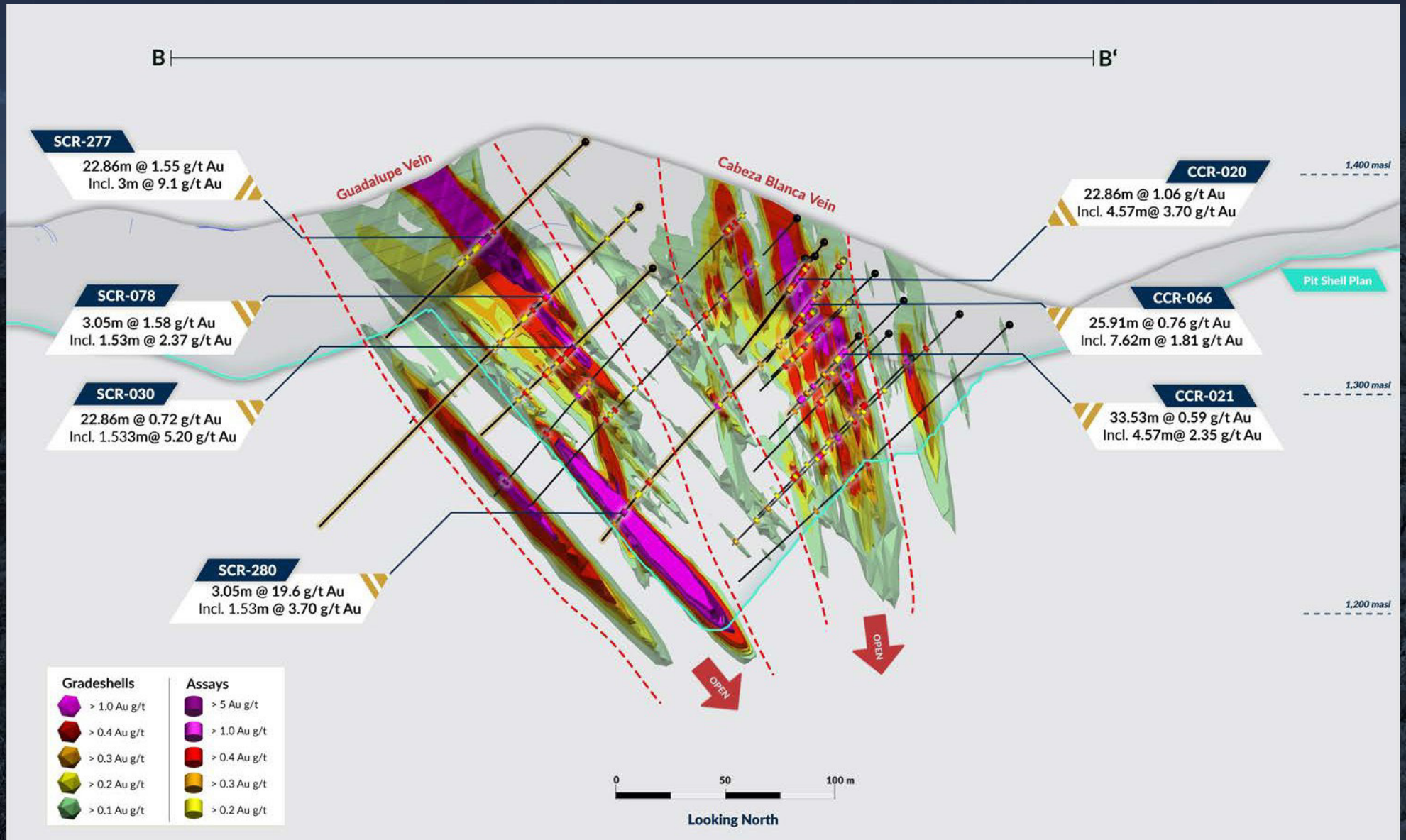
# CERRO CALICHE DRILLING TO DATE



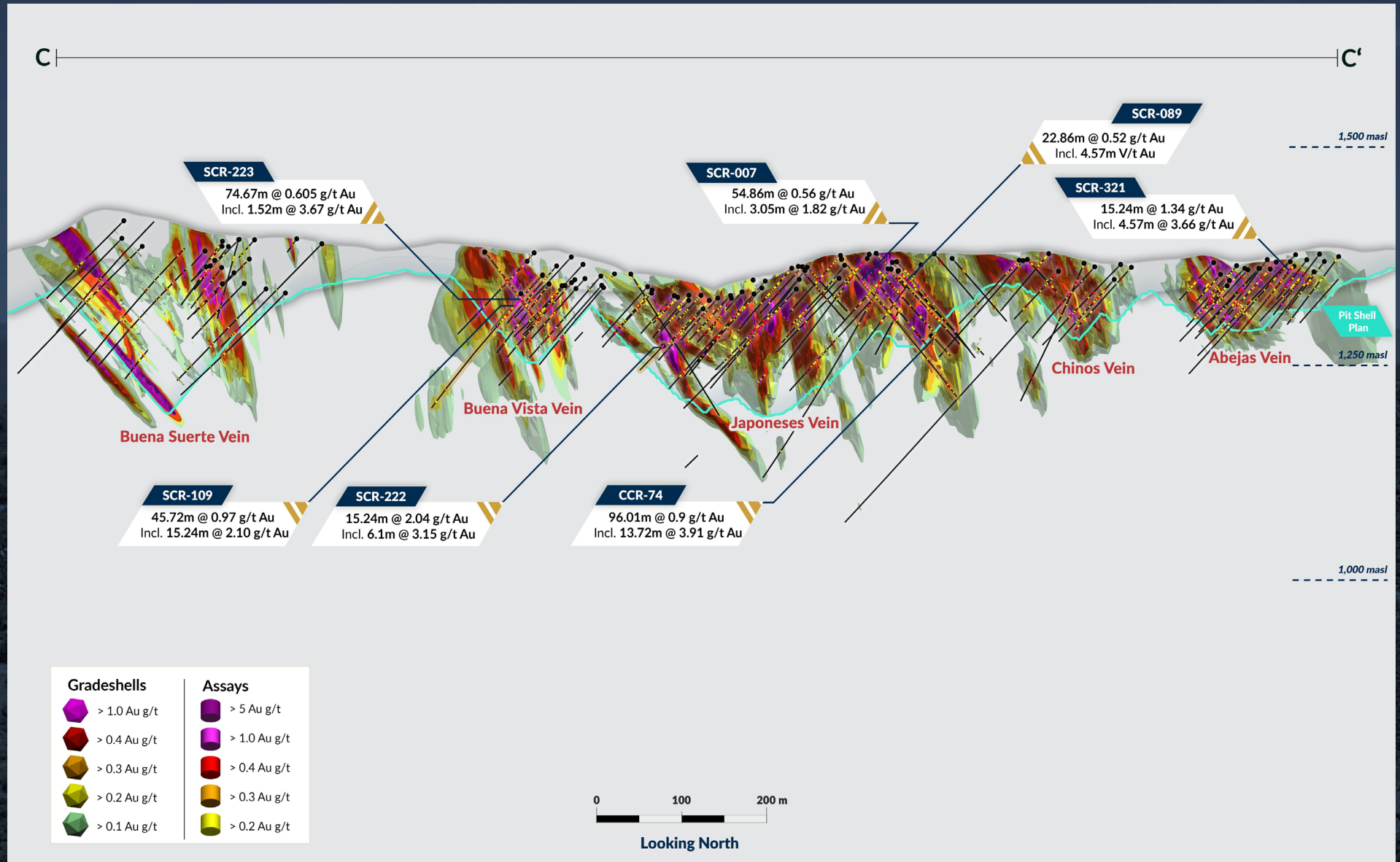
# CERRO CALICHE: EL COLORADO SECTION A-A



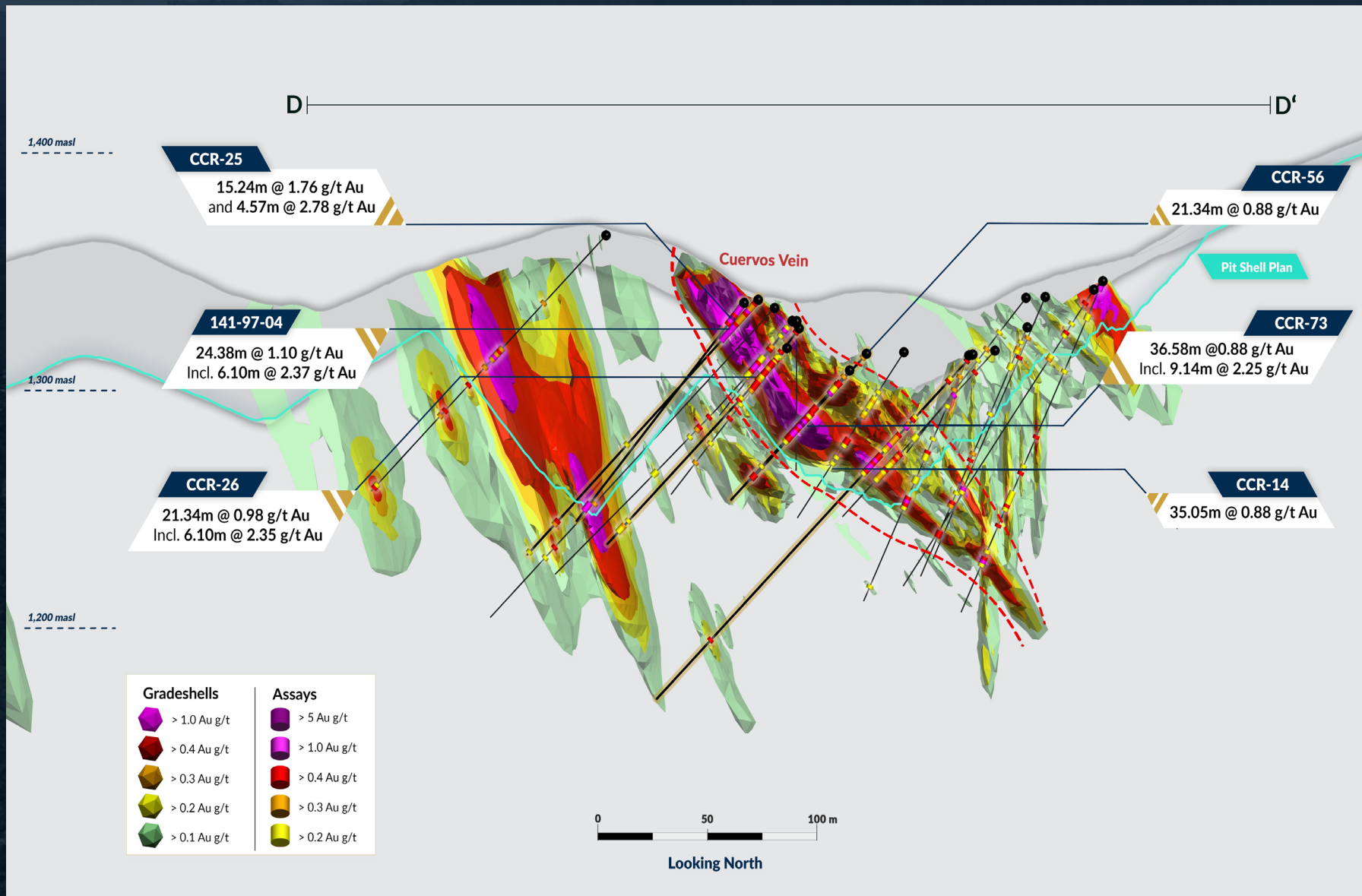
# CERRO CALICHE: GUADALUPE - CABEZA BLANCA B-B



# CERRO CALICHE: SECTION CENTRAL ZONE C-C



# CERRO CALICHE: CUERVOS SECTION D-D

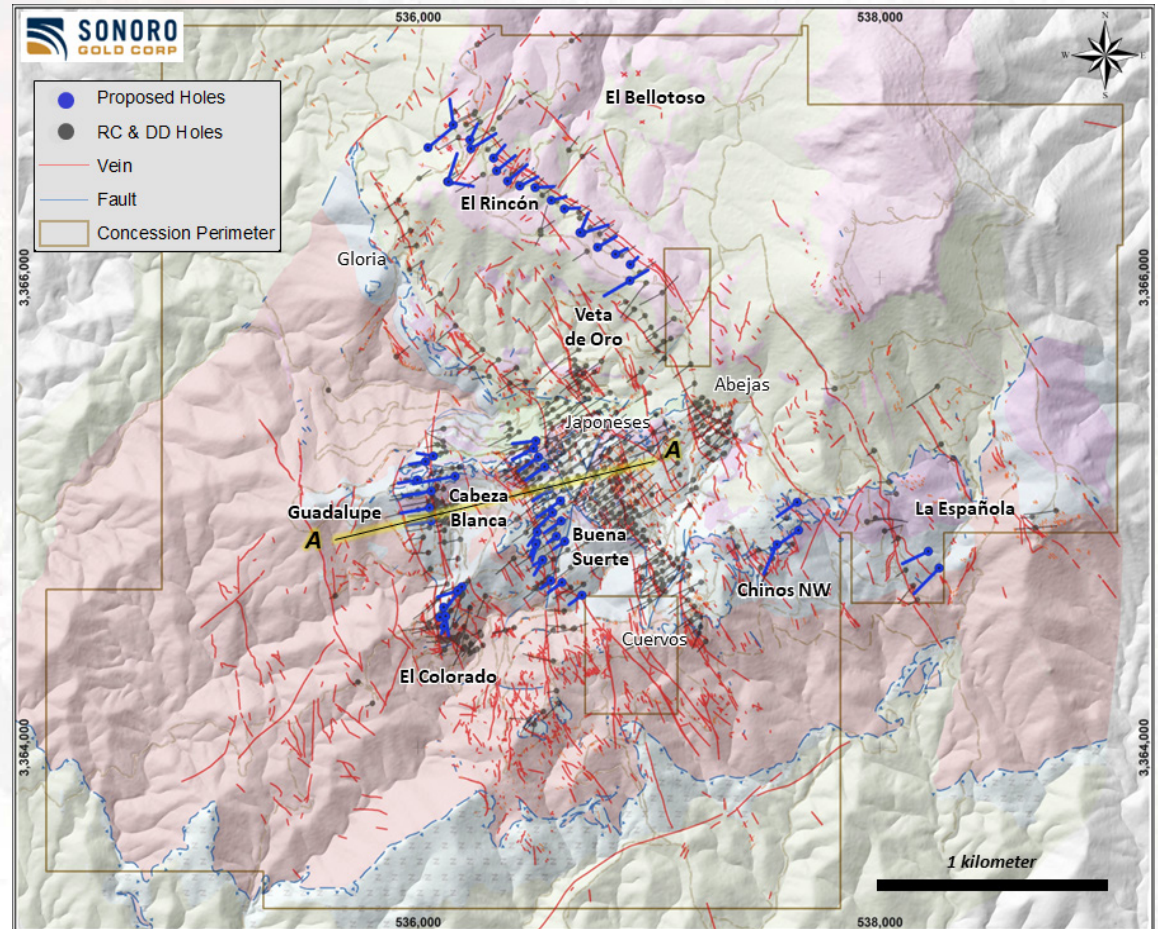


# TARGETED EXPANSION DRILLING PROGRAM

- ✓ Expand Higher-Grade Western Zones
- ✓ Increase overall resource size
- ✓ Increase resources within pit shells
- ✓ Drill deeper into zones open to depth
- ✓ Infill drilling to decrease strip ratio

## Cerro Caliche Drilling Targets

Mineralized Zones	Holes	Meters
El Rincon	20	3,500
Chinos Altos	3	550
La Española	2	400
Cabeza Blanca - Guadalupe	7	1,050
Buena Suerte	18	2,400
El Colorado	6	990
<b>Total</b>	<b>56</b>	<b>8,890</b>



*The reader is cautioned that the potential expansion is conceptual in nature and insufficient exploration has been conducted to define this material as a Mineral Resource. It is uncertain if further exploration will result in these exploration target estimates being delineated as Mineral Resources or converted to Mineral Reserves in the future.*

# Cerro Caliche: Project Timeline\*

Upcoming Milestones	Month 1	Month 2	Month 3	Month 4	Month 5	Month 6	Month 7	Month 8	Month 9	Month 10	Month 11	Month 12	Month 13
Permitting (MIA & CUS)	★												
Expansion Drilling	→												
Construction Financing	→												
Detailed Mine Engineering	→												
Upgrade Roads / Site Preparation		→											
Construction Phase			→										
Mine Commissioning / Startup									→				★
Drilling to Extend Mine Life									→				

\*Note: This document contains certain “forward-looking statements” within the meaning of Canadian securities legislation, with respect to the Company’s plans and forecasts for its Cerro Caliche Project. Readers are cautioned to review the qualifications on slides 2 of this document regarding such forward-looking statements.

# WHY SONORO GOLD IS DISTINCTIVE IN THE JUNIOR GOLD MINING SECTOR?

## ✓ Team

Proven & success-driven management team with extensive expertise in the discovery, delineation and development of mineral deposits.

## ✓ Project

1,400-hectare Cerro Caliche gold concession with only 30% of known mineralized zones drilled and assayed; 2023 PEA proposes an initial 9-year open pit, heap leach mining operation.

## ✓ Company

Insiders hold over 24% of Issued & Outstanding shares; loyal shareholder base across Canada, USA, Germany and Switzerland.

## ✓ Business Plan

Bring Cerro Caliche into production to finance ongoing expansion of the project's oxide gold resource.

## ✓ Financing

Management continues to successfully secure equity financing; raised over CAD \$23.9 million to date.







HAVE QUESTIONS?

**GET IN TOUCH  
WITH SONORO GOLD CORP**

Suite 300 – 2489 Bellevue Avenue  
West Vancouver, BC V7V 1E1

[www.sonorogold.com](http://www.sonorogold.com)

[info@sonorogold.com](mailto:info@sonorogold.com)

Tel: 604.632.1764

---

[www.sonorogold.com](http://www.sonorogold.com)